



JT Enroll User Manual

Table of Contents

Software Required	3
Software Installation.....	3
Configuring JT Enroll	4
Enrolling Employees	5

Software Required

All required software can be downloaded directly from our website: <http://www.jarrison.co.za>

JT Enroll

The Jarrison software used to enroll employees.

http://www.jarrison.co.za/jtinstalls/Optional/JT_Enroll_7.4.1.zip

For **Sagem** devices:

JT Sagem Interface

This interface allows communication between Jarrison Software and Sagem (Morpho) devices.

http://www.jarrison.co.za/jtinstalls/Interfaces/Sagem/JT_Morpho_Interface.zip

MSO Drivers

These are the hardware drivers for the MSO enrollment reader. Please check your system properties to determine whether the 32-Bit or 64-Bit drivers are needed.

http://www.jarrison.co.za/jtinstalls/Interfaces/Sagem/Drivers/Sagem_MorphoSmart_USB_64_bit_Driver_3.56.zip

http://www.jarrison.co.za/jtinstalls/Interfaces/Sagem/Drivers/Sagem_MorphoSmart_USB_32_bit_Driver_3.56.zip

Protection Installer

Not needed on a Windows XP system, but essential on a Windows 7 System.

http://www.jarrison.co.za/jtinstalls/Interfaces/Sagem/Drivers/Protection_Installer.zip

For **ZKTeco** devices:

JT ZK Interface

This interface allows communication between Jarrison Software and ZK devices.

http://www.jarrison.co.za/jtinstalls/Interfaces/ZK/JT_ZK_Interface_5.zip

4000 Drivers

These are the hardware drivers for the ZK enrollment reader.

<http://www.jarrison.co.za/jtinstalls/Interfaces/ZK/ZK4000Driver.zip>

For **Suprema** devices:

JT Suprema Interface

This interface allows communication between Jarrison Software and Suprema devices.

http://www.jarrison.co.za/jtinstalls/Interfaces/Suprema/JT_Suprema_Interface.zip

JT Bio Mini Interface

These are the hardware drivers for the Bio Mini enrollment reader.

http://www.jarrison.co.za/jtinstalls/Interfaces/Suprema/JT_BioMini_Interface.zip

For **Anviz** devices:

JT Anviz Interface

This interface allows communication between Jarrison Software and Anviz devices.

http://www.jarrison.co.za/jtinstalls/Interfaces/Anviz/JT_Anviz_Interface.zip

For **iPulse** devices:

JT iPulse Interface

This interface allows communication between Jarrison Software and iPulse devices.

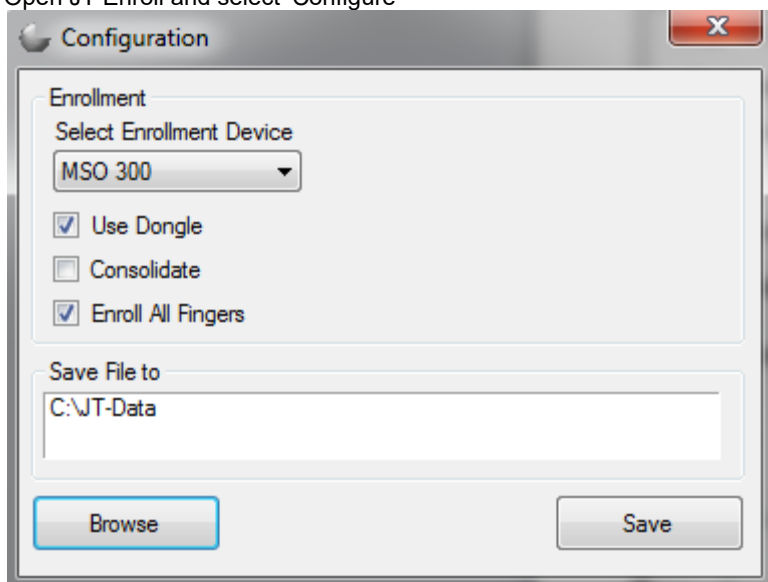
http://www.jarrison.co.za/jtinstalls/Interfaces/iPulse/JT_iPulse_Interface.zip

Software Installation

Download all of the software as indicated, in any order and install by accepting ALL of the default options. (Next, next, I agree, continue etc).

Configuring JT Enroll

Open JT Enroll and select 'Configure'



Select your **Enrollment Device** e.g. MSO 300.

For MSO enrollers, if you have a dongle or an '**Everif**' licence embedded in the enrolment device, then select '**Use Dongle**'. This enhances the fingerprint quality.

'**Consolidate**' will take three images of a fingerprint and combine them to create one image.

Click on '**Browse**' to set the path for saving the '**jte**' file

Enrolling Employees

The best way to enroll an employee's fingerprints is to ensure that their fingers are clean and dry, then ask the employee to add some facial oil onto their finger, this can be done by wiping their finger anywhere on their face (The forehead also works well). This makes the print bolder for the enrollment process.

Now click on the circle above the desired finger to scan, depending on enrollment configuration, the employee may have to present his or her finger several times.. While scanning, watch the progress bar on the left for an indication of the quality of the fingerprint. Capture the print at its best quality.

Once an acceptable fingerprint has been scanned, you can proceed to do the next finger, as the enrolment must be done for two fingers. Now select at least two of the enrolled fingers to be the 'Clocking' fingers by clicking in the small check box. These will be the two fingerprint templates that are downloaded to the device/s. The circle will be **green** for an enrolled finger, white for no enrolment and **red** for the two clocking fingers. It is recommend to use the index, middle or ring finger as the small finger has less surface area for the system to read, but if need be, it will still work. Hover over the circles to see the enrolled quality. Any of the two enrolled fingers can be used on the fingerprint readers to clock, as it makes no difference to the clockings.

Once both fingerprints are scanned the employee can be saved to file for mailing later, or can be mailed directly by selecting the Email button. This will open your mail program with a ".jte" file attached ready for mailing to the required recipient.

